

# Great Outdoors

## Fishing Vest

Loads of pockets for every supply!

by Adrienne Franklin

**Pattern Level:** Intermediate/Advanced

**Sizes:** Men's medium, large and extra large

**Seam Allowance:** 1/2" used throughout unless otherwise noted. Read all instructions before beginning. Press carefully step-by-step.



**Enlarging Pattern:** enlarge pattern using a copier or other method until each background square measures 5/8". If using a copier to enlarge the pattern, you may need to make enlargements in sections and tape them together.

### Materials Needed:

3-yards beige blender print

6" beige Velcro 5/8" wide

1" D-ring

Matching thread

### Cutting:

Pocket flaps- cut 4 of A, 4 of B, 2 of C and 2 of D.

Pockets- Refer to pocket cutting diagrams for instructions. Note- on back pocket cut a triangle 5 1/2" from each top corner as shown and discard triangle.

Front and back- cut 2 of back on fold, cut 4 of front.

Tabs- cut 2- 3" x 7"

### Assembly

1. Tabs - Press under 1/2" on the long edges of each tab, fold tabs in half lengthwise wrong sides facing and stitch closed along folded edges. Stitch close to remaining long edge.
2. Pockets A- D: Cut Velcro into 6 - 1" pieces. Separate Velcro pieces and sew fuzzy side of Velcro on to 2 of flap A, 2 of flap B, 1 of flap C, 1 of flap D as indicated on pattern. Sew flaps together in pairs, right sides facing along curved edges, leaving the straight bottom edge open for turning. Trim seams, clip and turn right side out. Topstitch 1/4" from curved edges. Narrow hem top edge of each pocket by folding under a 1/4" and then folding under 1/4" again. Stitch close to fold. Sew remaining Velcro pieces to front center of each pocket 3/8" from top edge. Referring to **Fig. 1**, form box corners on each pocket by folding

- pocket diagonally right sides facing and stitching corners as shown. Press under 1/2" along side and bottom edges of each pocket. Pin and sew pockets in place on fronts of vest pivoting at corners, following spacing suggestions in diagrams. Fold 1 tab in half crosswise and pin raw edges under the bottom edge of pocket D so that it will be caught in pocket stitching. Pockets can be pressed so a pleat is formed on the sides and bottom. See **Fig. 2**. Note: placement might have to be changed slightly for sizes medium and large or if pattern has been altered. Pin flaps above pockets as shown in **Fig. 3**, placing raw edge of flap along top edge of pocket. Stitch. Trim seam allowance close to stitching. Fold flap down as shown in **Fig. 4** and top stitch 1/4" from top edge enclosing raw edges.
3. Pocket E- Narrow hem top edge of pocket by folding under 1/4" then folding under a 1/4" again and stitching close to the fold. Press under 1/2" seam allowance on the remaining 3 edges of pocket. Fold a tab in half crosswise and insert a D-ring. Pin pocket in place on vest front pinning tab in place so that raw edges will be caught in pocket stitching. Sew vertical divisions in pocket 3" apart.
  4. Back pocket - narrow hem diagonal edges of pocket. Press under 1/2" along top and side edges. Pin pocket in place on vest back keeping bottom raw edges even and centering pocket along back. Baste along bottom edge. Stitch to vest along top edge and side edges leaving diagonal edges open.
  5. Sew vest fronts to vest back right sides facing at shoulder seams. Repeat for lining pieces. Sew lining to vest right sides facing as shown in **Fig. 5**, leaving sides open for turning. Trim and clip seams. Turn right side out through sides. Sew fronts to back at side seams, keeping lining free. Slipstitch lining closed at side openings. Vest is complete.

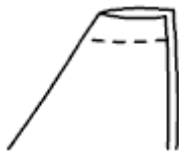


Fig. 1

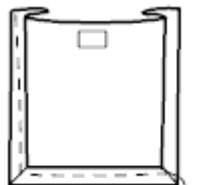


Fig. 2

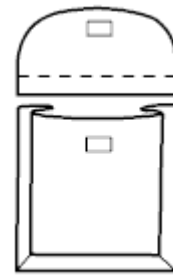


Fig. 3

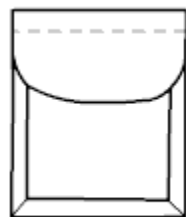


Fig. 4

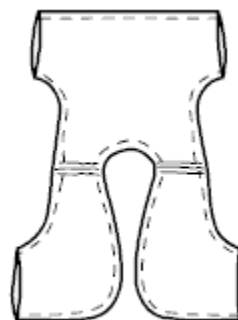
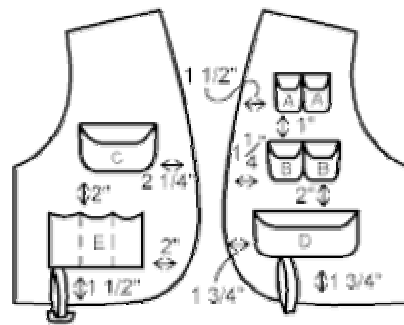
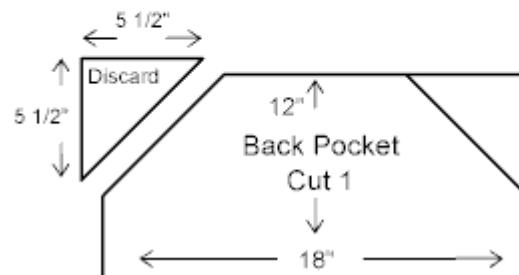
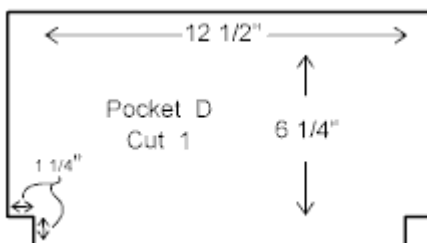
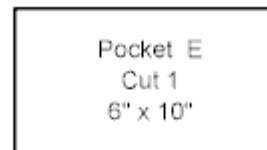
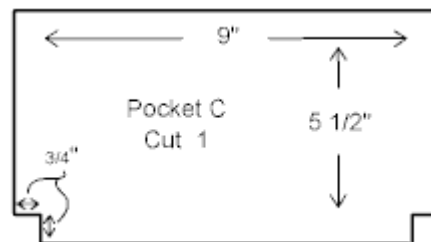
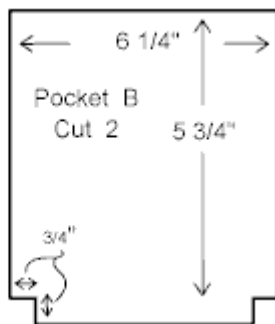
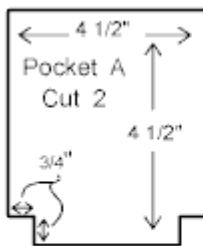


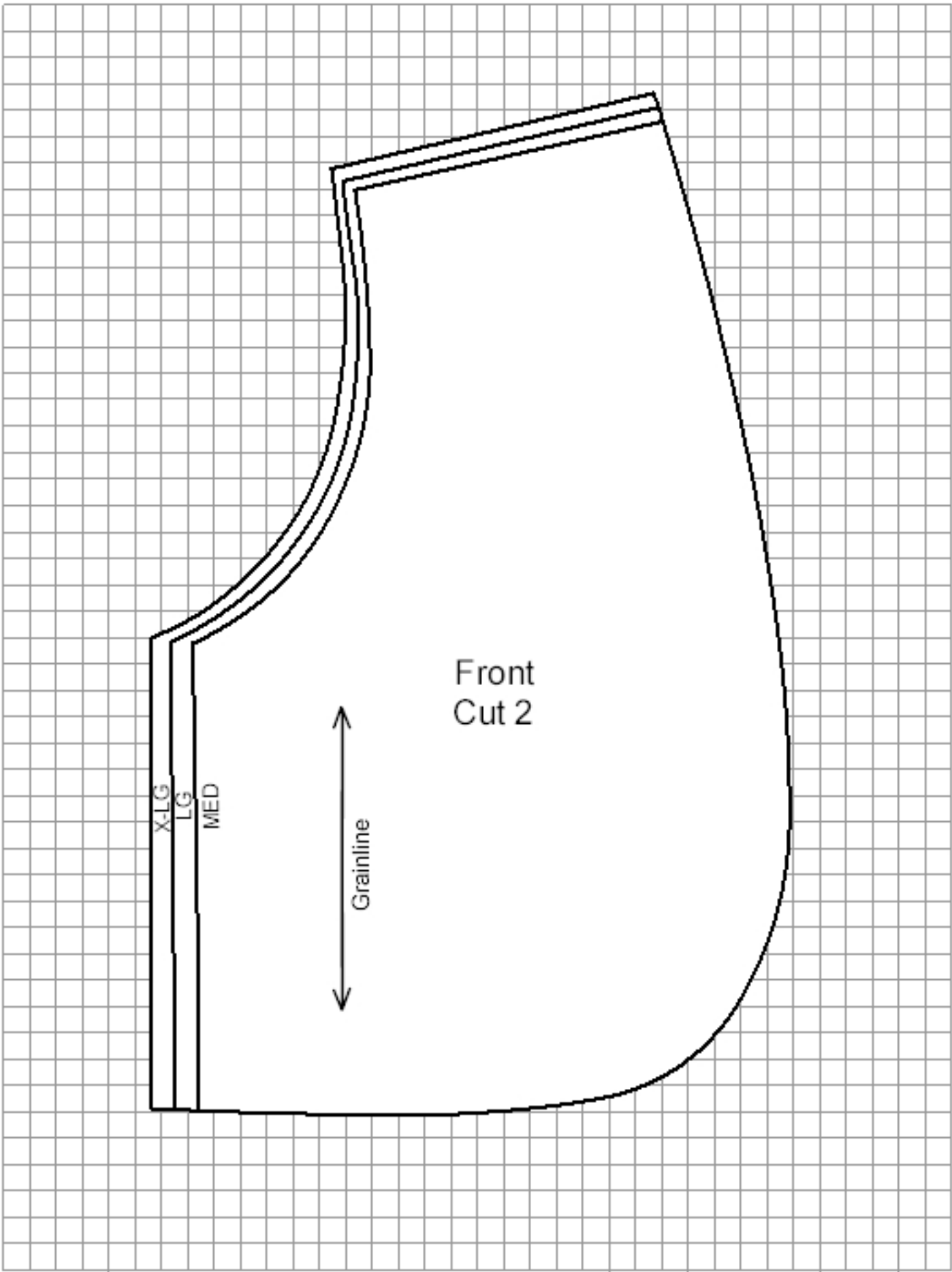
Fig. 5



Pocket Placement Diagram

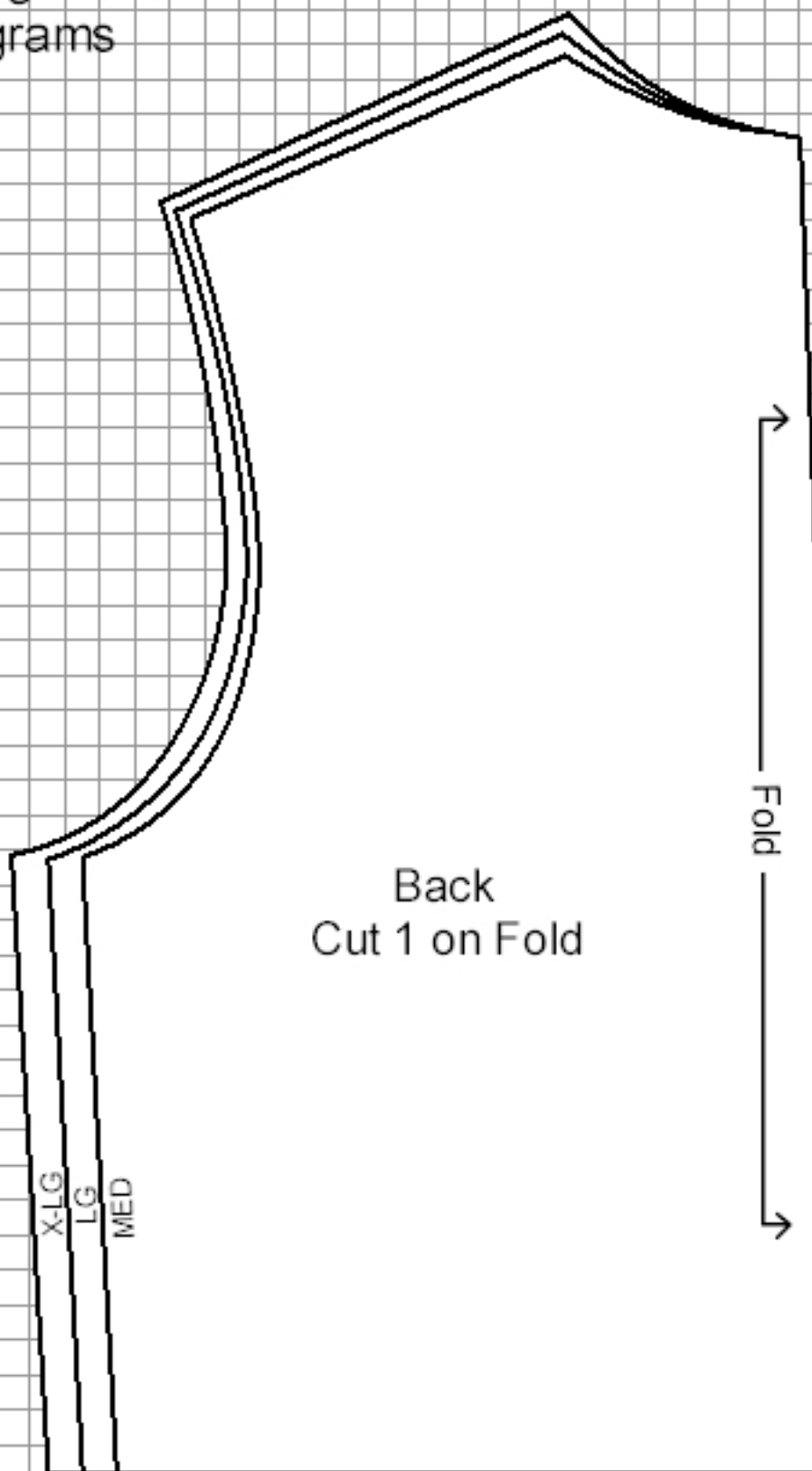


While all possible care has been taken to ensure the accuracy of this pattern, we are not responsible for printing errors or the way in which individual work varies.

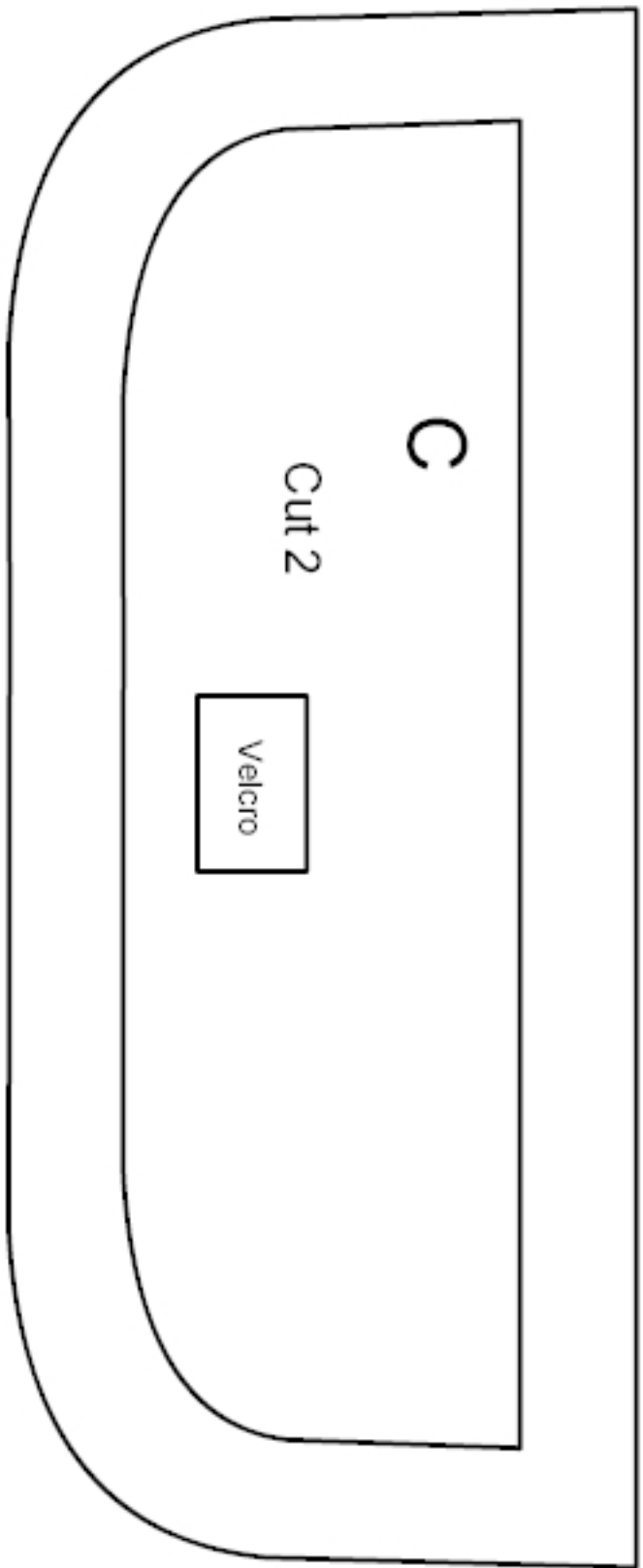
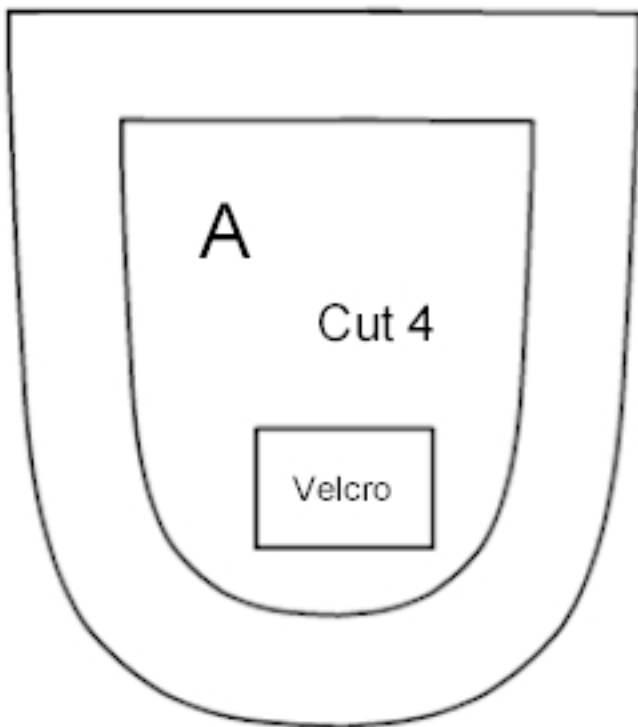


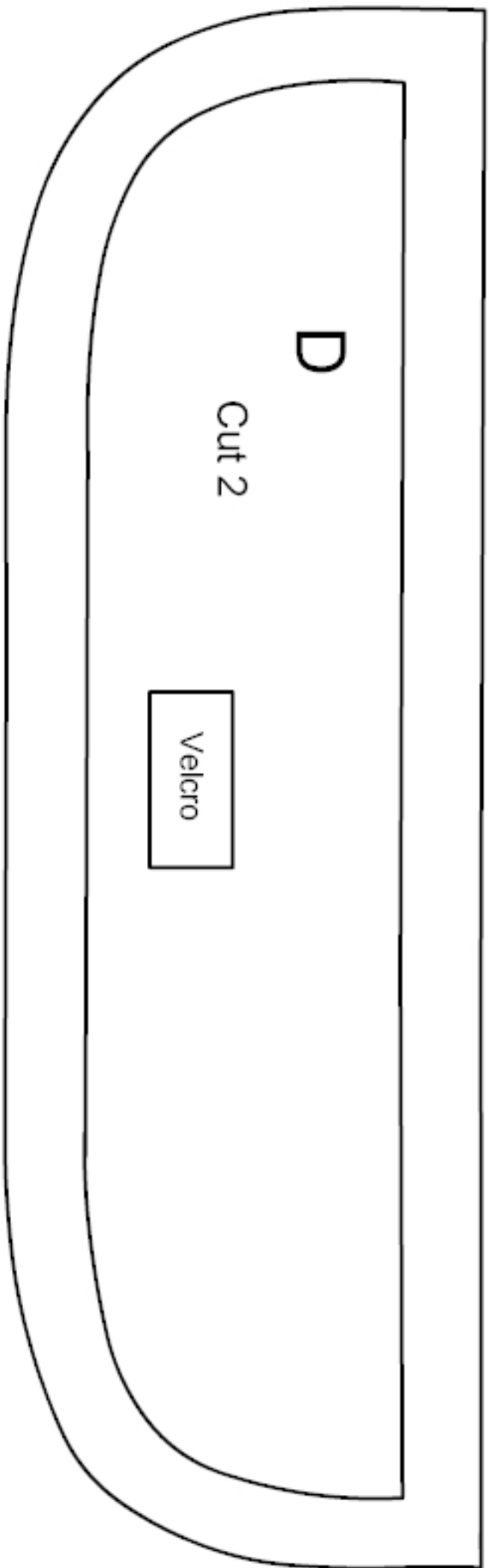
1 SQ = 5/8 Inch

Fishing Vest  
Diagrams



1 SQ = 5/8 inch





D

Cut 2

Velcro

