

## ***“ARTISTIC GREETINGS”***



Buried in your fabric scrap bag is a never-ending source of delightful greeting cards waiting for you to discover them. These cards are quick and easy to put together so why not challenge yourself to create some unique greeting cards with whatever materials lie in your sewing room and your scrap bag. Whether you typically use bright and colorful fabrics or your taste runs toward the more subdued, the possibilities are endless. Perhaps you have some “orphan” quilt squares or some sample stitch outs from your embroidery machine that you couldn’t bring yourself to throw away. Here is an opportunity to use them and have some fun along the way. These little treasures are fun to make and even better to receive.

### **Skill Level: Beginner**

Created by: Geri Frazier, Elna USA Education Consultant

## Supplies:

Note: The supplies listed below are for the basic construction of each card. Please review the project directions for additional supplies needed.

One package of Picture Frame Cards, 5" x 6-7/8" and available at craft stores

Variety of scrap pieces of fabric

5" x 6" of thin batting such as Warm and Natural™ for each card

A selection of decorative threads and yarns

Metallic machine thread such as Sliver by Sulky™

Thread for piecing or construction

A selection of beads, buttons, or charms

Monofilament thread

75/11 or 80/12 machine needle

Temporary basting spray

Rotary cutter, mat and ruler

Pencil with eraser

## Machine(s) and Accessories:

6005 Heirloom Edition

or Any Elna Sewing Machine with a zigzag stitch

EnVision 8007 for machine embroidery

Standard presser foot "A"

Satin Stitch foot – standard accessory

## Instructions:

### Card #1 – Quilting with Embellishment

1. Cut several strips of coordinating fabric 1 inch to 1-1/2" wide.
2. Piece together with a 1/4" seam until your piece measures about 5" x 6". Press the seams in one direction.
3. Thread the machine needle with a contrasting decorative thread. This will be a machine embroidery thread, either rayon or polyester.
4. Lay your pressed piece on top of a 5" x 6" piece of batting.
5. Select one or more of the decorative stitches on your machine and stitch along the seam lines to embellish.
6. To make the black swirl on the card, very loosely wrap a yard of eyelash yarn around your finger 25 times. Slip the yarn off your finger and lay the yarn swirl into position. Stitch down with a 4.0 width and 3.0 length zigzag stitch.
7. Trim the piece to 4" x 5" and slip inside the window of the card.
8. With your pencil, lightly mark a pivot point at each corner. (See illustration 1)
9. Select stitch # 8 and stitch around the window of the card. Pivot when your needle is directly over the pencil line. Keep in mind that you're sewing on paper and it's not very forgiving so take your time! Erase the pencil line and send the card to someone special.
10. To cover the stitching on the inside of the card. Type a clever note on a decorative paper. Trim paper down to fit on card and glue in place.

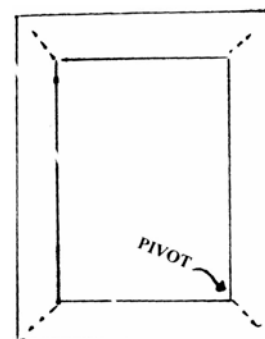
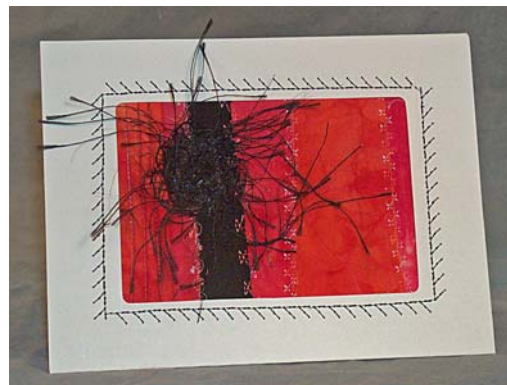


Illustration 1

## Card #2 – Quilted Card with Decorative threads

1. Start with a piece of fabric about 5" x 6". Fuse 4 or 5 small triangles of fabric in a contrasting color to the main piece.
2. Lightly spray a piece of batting with your temporary basting spray and place the fabric right side up on the batting.
3. Very lightly spray the face of the fabric with the basting spray.
4. Take two or three one-yard lengths of decorative yarns and swirl on top of the piece.
5. Drop the feed dogs on the machine and attach the darning foot.
6. Thread the needle with a metallic thread and place a monofilament in the bobbin.
7. To secure the decorative threads free-motion on the fabric piece. This will not only secure the decorative threads but also add a decorative element to your piece.
8. Wrap some heavy decorative threads around three fingers several times. Slip the threads off your fingers and twist in the center to form a figure eight. (See illustration 2).

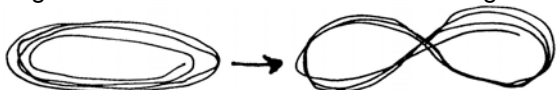
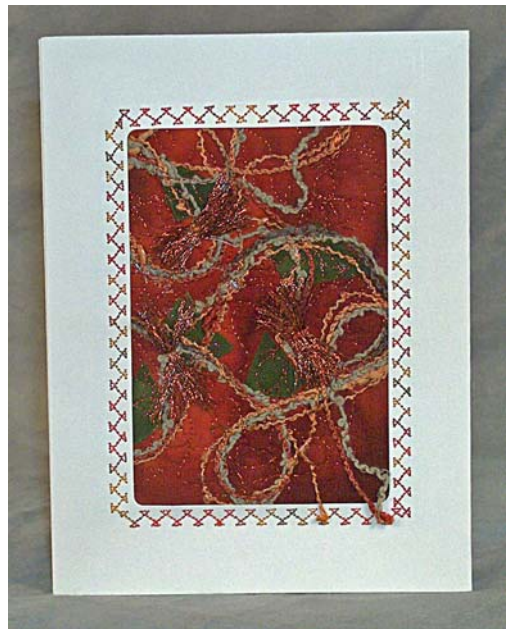


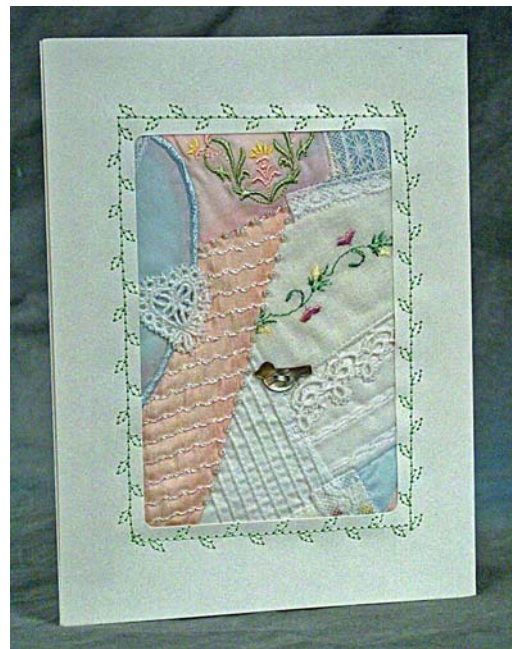
Illustration 2

9. Lay the figure eight onto the piece and straight stitch back and forth several times to hold it in place. Trim the loops to about 3/4".
10. Follow steps 7-10 from Card #1 to finish the card.



## Card #3 – Heirloom

1. Start with a piece of muslin fabric about 5" x 6".
2. Select several scraps of heirloom practice pieces and bits of lace.
3. Attach the pieces crazy-patch style to the muslin base.
4. Lightly spray the basting spray to the batting and lay the muslin base onto the batting right side up.
5. Hand sew buttons, beads or small charms to the piece through all layers.
6. Follow steps 7-10 from Card #1 to finish the card.



## Card #4 – Orphan Quilt Block

1. Start with an “orphan” quilt block and trim to 5” x 6”. The sample shows a piece of a border that was left over from another project.
2. Lay the piece onto a piece of batting and quilt as desired.
3. Sew the beads onto the piece by hand.
4. Follow steps 7-10 from Card #1 to finish the card.



## Card #5 – Machine Embroidered

**This card was embroidered on the Envision 8007.**

1. The background on this card is put together the same as Card #1.
2. Once the piece is large enough to put into a machine embroidery hoop, the Japanese Kanji characters were stitched out. There are many sources for these types of embroidery designs from design pack collections to designs from the internet.
3. Trim the whole piece to size and fuse onto a rather stiff piece of interfacing.
4. Glue an oriental coin with a tassel of yarn onto the card.
5. Follow steps 7-10 from Card #1 to finish the card.



## Card #6 – Winter Scene

**The snowflake on this card was stitched on the Envision 8007.**

The design was a free download from the Internet. This is a free-standing design that will be stitched out on stabilizer and then removed. So when selecting embroidery pattern, keep this in mind.

1. Start with a piece of dark blue fabric cut about 5" x 6".
2. Lay the piece right side up on a piece of batting slightly larger than the main fabric.
3. Thread the machine with a silver metallic thread in the needle and monofilament in the bobbin.
4. Select the star stitch #44 on the 6005 Heirloom Edition. As soon as the machine begins to sew, touch the single-pattern lock off key and the machine will stitch one star and then lock the stitch and stop. Continue this process until you have scattered stars all over the blue background. Create a random pattern for the snow to create a more natural look.
5. Stitch out the snowflake on a layer of heavy water soluble stabilizer using white embroidery thread. Remove the stabilizer following the manufacturer's instructions. Before we move onto the next step make sure the snowflake is dry. Use about a 12" length of silver cord to make a hanger for the snowflake.
6. Position the snowflake in place and turn the hanger thread to the inside of the card. Hold in place with a small piece of scotch tape.
7. Follow steps 7-10 of Card #1 to finish the card.



When you're finished with this project discard the needle as it will be very dull. Clean out the bobbin area of your machine to remove any small bits of paper that may have found their way in there.

# Enjoy!

For other exciting projects like this one visit our Web site at [www.elnausa.com](http://www.elnausa.com)