

Kings Cape

Designed and Created by Tinneke Pot

This fun and easy cape is sized for a child about 5 years old.



Sewing Supplies

- Husqvarna Viking Sewing machine
- 1 yd (90 cm) of red plush fabric, at least 43 3/8" (110 cm) wide
- 3/8" yd (60 cm) of white fleece fabric on 59" (150 cm) width
- Scraps of black felt fabric for dots
- Sewing thread, red, white and black
- 19" (48 cm) of 3/4" (2 cm) wide elastic
- 1 buckle
- 1 safety pin
- 1 needle for hand sewing

Husqvarna Viking Accessories

- Edge Stitching Foot (412 40 77-45)

You can find these and many other accessories in the Husqvarna Viking Accessory User's Guide or on our website www.husqvarnaviking.com, for purchase at your nearest Husqvarna Viking Dealer.

3/8" (1 cm) seam allowance included in all measurements.

CUT

From the red plush fabric:

One piece 43 3/8" (110 cm) wide and 30 3/8" (77 cm) long.

From the fleece fabric:

One strip 8" wide and 51 1/4" (130 cm) long for the lower edge.

Two strips 4.5" (11 cm) wide and 28 3/8" (72 cm) long for front edges.

Cut small dots from the black felt fabric.

SEW

At the upper edge of the red plush fabric, turn under and press 3/8" (1 cm) then turn under and press 2" (5 cm), pin in place. Snap on the Edge Stitching Foot. Thread your sewing machine with red sewing thread on top and in the bobbin. Straight stitch along the bottom of the folded part. Snap on presser foot A and stitch 1" (2.5 cm) up from the previous stitch to create a casing. Illustration A.

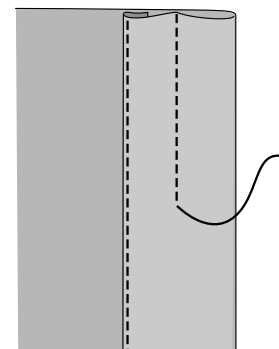


Illustration A.

Insert the elastic in the casing using the safety pin. Stitch at each end to keep the elastic in place.

Rethread with white sewing thread on top and in the bobbin. Set your sewing machine for heavy woven on your Sewing Advisor or adjust the stitch length to 3.0. Fold one of the fleece strips for front edges in half lengthwise, right sides together. Sew the short end using 3/8" (1 cm) seam allowance. Trim the corner and turn the right side out.

Illustration B.

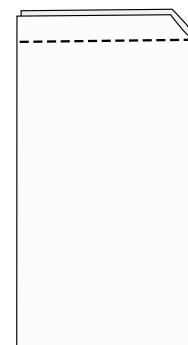


Illustration B.

Place the fleece edge right sides together with the front side of the cape, raw edges aligned and pin. Snap on presser foot B and select an overlock seam (Designer I: A18) or use your Huskylock. Stitch the edges together using 3/8" (1 cm) seam allowance. Trim excess fabric close to the stitches. Repeat for the opposite front side.

Illustration C.

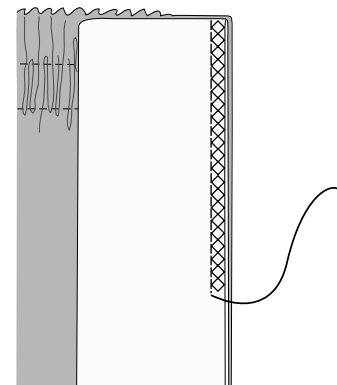


Illustration C.

Snap on presser foot A. Fold the fleece for the lower part of the cape in half lengthwise right sides together. Sew the short ends using 3/8" (1 cm) seam allowance. Trim the corners and turn right side out. Place the fleece right sides together with the lower edge of the cape, raw edges aligned and pin. Snap on presser foot B and select an overlock seam (Designer I: A18) or use your Huskylock. Stitch the edges together using 3/8" (1 cm) seam allowance. Trim excess fabric close to the stitches.

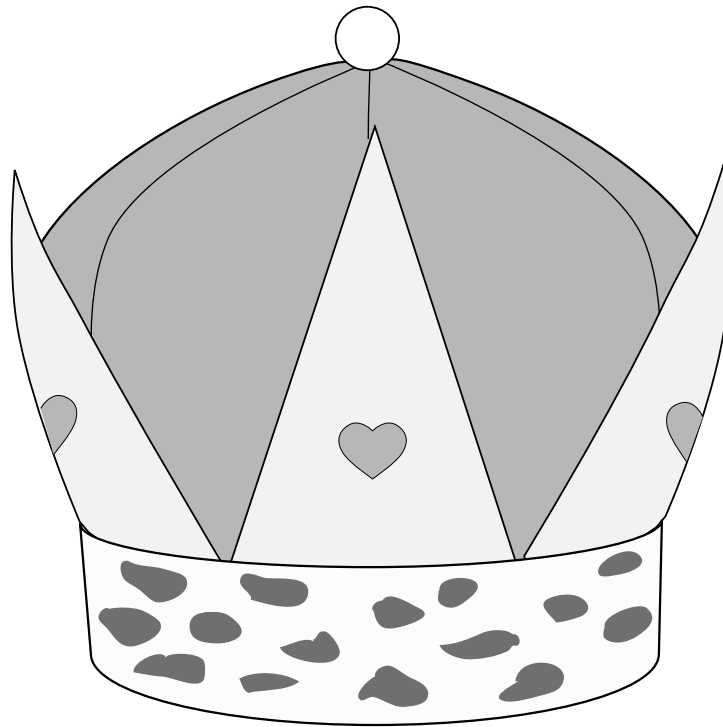
Rethread with black sewing thread on top and select a three step zigzag stitch. Sew the black felt dots here and there on the white border of the cape.

Attach the buckle closure at the upper edge on each side of the fronts.



 **Husqvarna**

VIKING



Kings Crown

Designed and Created by Tinneke Pot

This beautiful king's crown will delight kids of any age. Download the pattern pieces from our web site, www.husqvarnaviking.com. Or, trace the pieces from page 3.



Sewing Supplies

- Husqvarna Viking Sewing machine
- 3/8 yd (40 cm) of red plush fabric
- 1/4 yd (20 cm) of white fleece fabric
- 1/4 yd (20 cm) of gold fabric
- Scraps of black felt fabric for dots
- 1/4 yd of batting
- 1/4 yd (20 cm) of stiff fusible interfacing
- Sewing thread to match the fabrics
- 1 large bead
- 6 heart shaped beads
- Glue for the hearts if needed
- Needle for hand sewing

3/8" (1 cm) seam allowance included in the pattern pieces unless otherwise noted.

CUT

Print out the pattern pieces and cut out. Place the large piece on the red plush fabric, cut 6 pieces. Place the triangle on gold fabric and cut 12 pieces. Place the triangle on fusible interfacing and cut 6 pieces without seam allowance. Place the large pattern piece on the batting and cut out 6 pieces. Cut a strip from the white fleece fabric, 6" x 22 3/4" (15 x 58 cm). Cut small dots from the black felt fabric.

SEW

Thread your sewing machine with sewing thread on top and in the bobbin. Fuse the interfacing to the wrong side of 6 of the triangles. Place one triangle on top of another, right sides together. Straight stitch the two sides and leave the bottom open for turning. Trim the tip of the triangles. Turn and press. Repeat for all triangles to make 6 pieces. Illustration A.

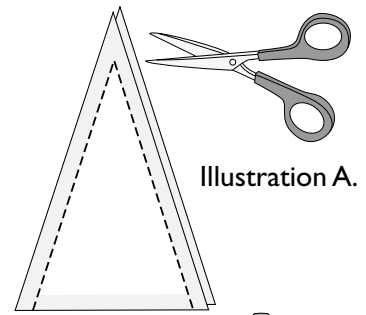


Illustration A.

Rethread with red sewing thread on top and in the bobbin. Place batting on the wrong side of each plush piece. Place one plush with batting piece on top of another, right sides together. Straight stitch one of the sides. Place another piece on top, right sides together and straight stitch one side. Repeat until you have sewn all sides. Sew the first and last pieces together to form a circle. Illustration B.

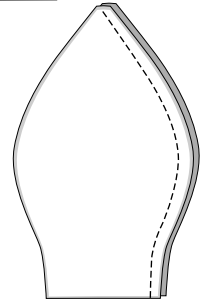


Illustration B.

Rethread with black sewing thread on top and in the bobbin. Sew the black dots to the white fleece with a zigzag stitch. Position the dots on half of the strip as shown. Illustration C.

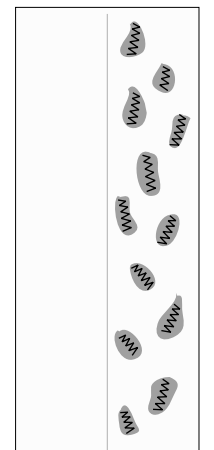


Illustration C.

Rethread with white sewing thread on top and in the bobbin. Place the short sides of the white fleece right sides together. Straight stitch and press the seam allowance open. Illustration D.

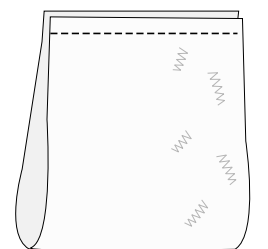


Illustration D.

Pin the gold triangles on top of the red plush, side by side all around. Select your basting stitch and baste them to the hat. Illustration E.

Pin the white fleece circle right sides together with the lower edge of the hat (the side with dots should be pinned to the hat). Select straight stitch and stitch all around. Remove the basting stitch if necessary .

Turn 3/8" (1 cm) under on the opposite edge of the white fleece. Fold it in half lengthwise and pin. Stitch again all around in the ditch between the fleece and the gold triangles, make sure to catch the fleece on the inside.

Sew the large bead on top of the hat. Glue the hearts to each gold triangle.

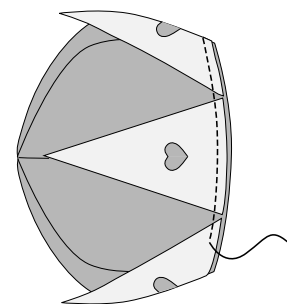
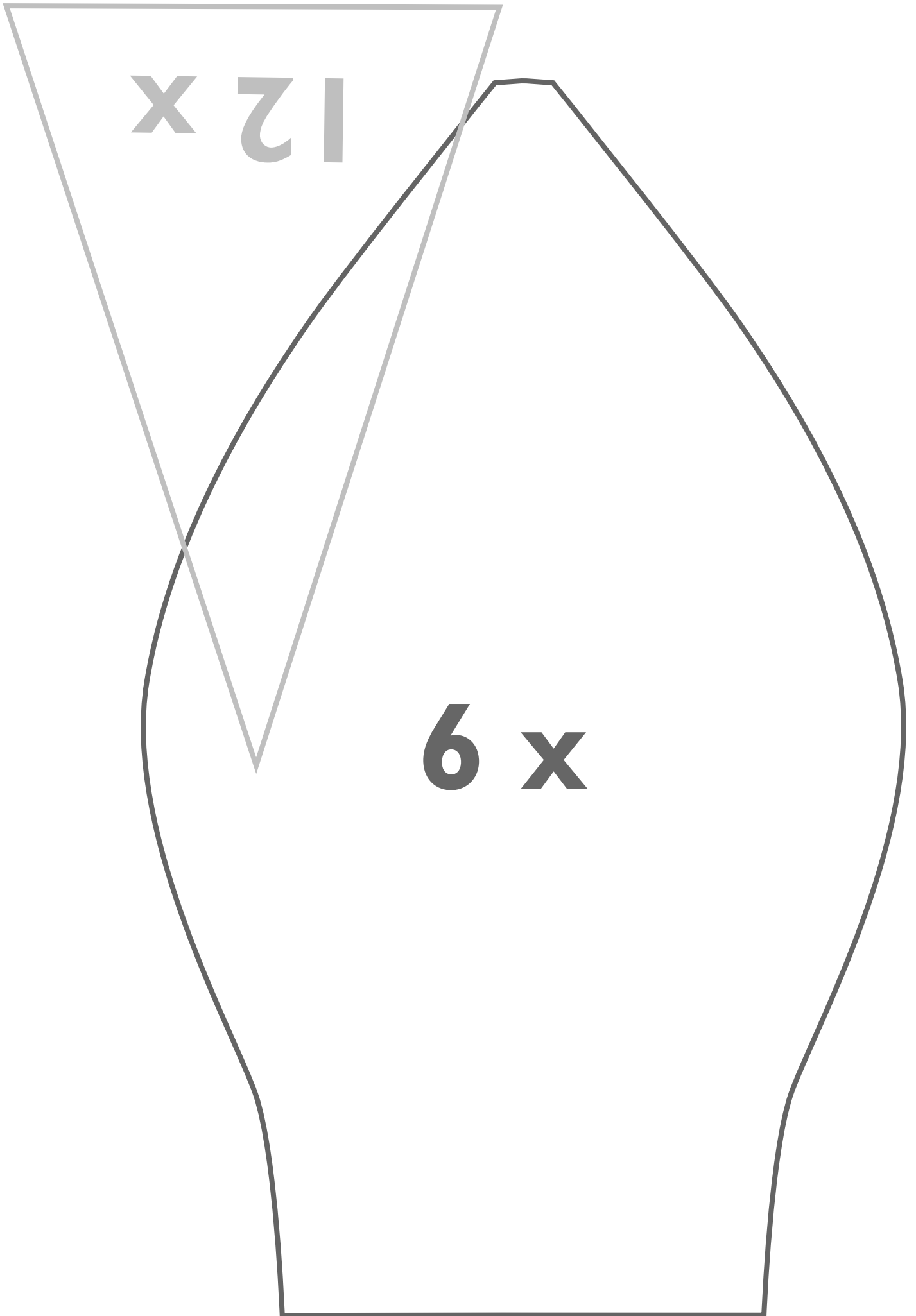


Illustration E.



 **Husqvarna**

VIKING



12x

6x